

Dell Visor with Controllers VRP100

Dell Visor VR118

Dell Visor Controllers VRC100

User`s Guide



Notes, cautions, and warnings

 | **NOTE:** A NOTE indicates important information that helps you make better use of your product.

 | **CAUTION:** A CAUTION indicates either potential damage to hardware or loss of data and tells you how to avoid the problem.

 | **WARNING:** A WARNING indicates a potential for property damage, personal injury, or death.

© 2018 Dell Inc. or its subsidiaries. All rights reserved. Dell, EMC, and other trademarks are trademarks of Dell Inc. or its subsidiaries. Other trademarks may be trademarks of their respective owners.

Contents

1 Introduction	4
2 Important Information	5
3 Box Contents	6
4 Windows Mixed Reality — Minimum System Specifications	8
5 Quick Setup of Hardware (Dell Visor VR118)	10
6 Setting up the Windows Mixed Reality experience	13
Alternative Visor Controller Pairing Method:	17
Room Calibration Process	18
7 Technical Specifications	19
8 Frequently Asked Questions	21
9 Troubleshooting	23
Bluetooth Best Practices.....	23
10 Statutory information	26
Warranty.....	26
11 Contacting Dell	27
For Dell Visor VR118:.....	27
For Dell Visor Controllers VRC100:.....	28

Introduction

The Dell Visor VR118 Mixed Reality Headset is a head-mounted device that enables you to experience an immersive Virtual/Mixed Reality when connected to a compatible Dell Desktop/Laptop/Gaming system.

NOTE: You can also pair the Dell Visor VR118 with the Dell Visor Controllers VRC100 (sold separately) for a more immersive and interactive experience.

The Windows Mixed Reality is a platform of experiences, where you can:

- Easily set up the headset in 10 minutes or less
- Pick up and move the PC and headset to a different room
- Listen to high-quality audio (headphones required)
- Navigate the virtual world using the Dell Visor Controllers VRC100 (sold separately)
- Play VR games
- Watch 360° videos
- Interact and play games with friends and family in social applications (separate software application purchase required)
- Watch Live events
- Talk to Cortana as a personal assistant (Cortana with voice-certified microphone required)
- Take Mixed Reality capture and share experiences with friends and family (separate software application purchase required)
- Watch commercially available, professional-quality Virtual Reality experiences (separate software application purchase required)

Important Information

Ensure you read and understand the personal and product safety instructions in the Safety, Environmental, and Regulatory Information (SERI) document *before* you use the Dell Visor VR118.

 **CAUTION:**

The Mixed Reality headset should not be used by children under the age of 13 as they are in a critical period of visual development. Children above the age of 13 can use the headset under adult supervision, closely monitored during and after use, for any decrease in multi-tasking abilities, hand-eye coordination, balance, and/or disorientation.

Box Contents

Dell Visor VR118

The Dell Visor VR118 ships with the components shown below. Ensure that you have received all the components and contact Dell (see your invoice for contact information) if something is missing.

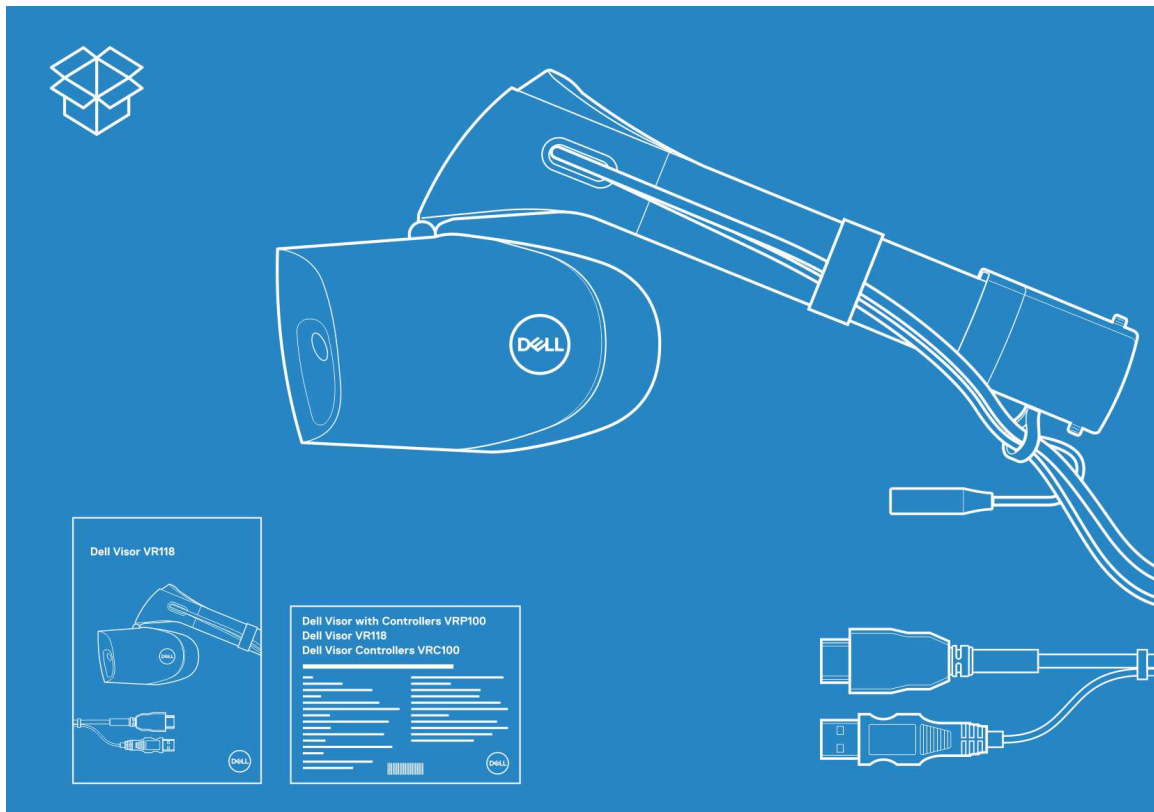
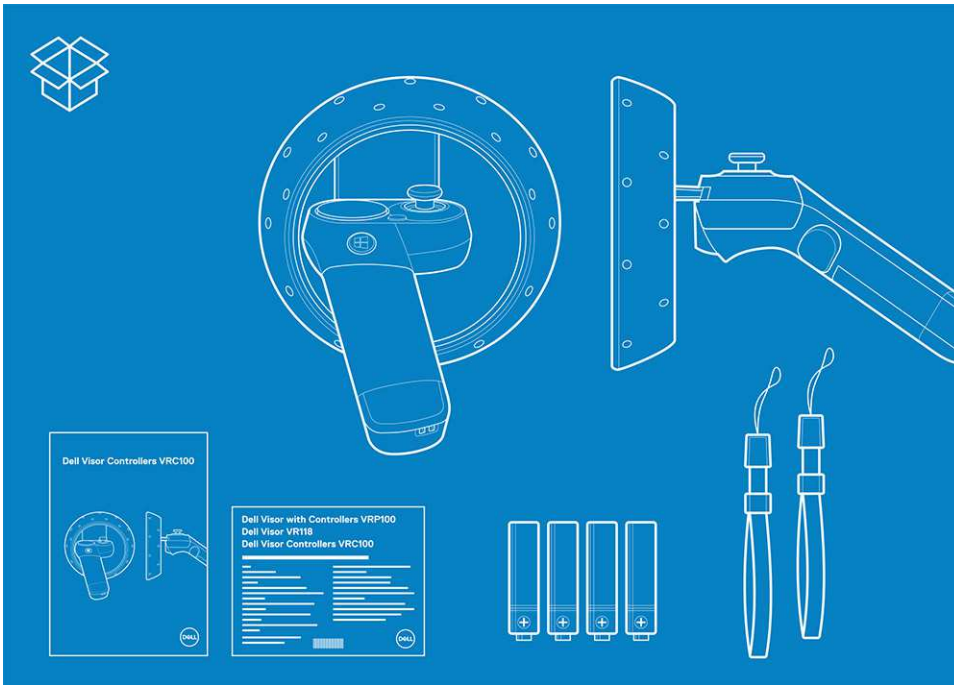


Figure 1. Box contents of VR118

- Dell Visor VR118
- Quick Setup Guide
- Safety, Environmental, and Regulatory Information (SERI)

Dell Visor Controllers VRC100

The Dell Visor Controllers VRC100 ships with the components shown below. Ensure that you have received all the components and contact Dell (see your invoice for contact information) if something is missing.



- Dell Visor Controllers VRC100 (2)
- Batteries (4)
- Lanyards (2)
- Quick Setup Guide
- Safety Environmental and Regulatory Information (SERI)

Dell Visor with Controllers VRP100

The Dell Visor with Controllers VRP100 ships with all of the components of Dell Visor VR118 and Dell Visor Controllers VRC100, as shown above.

Windows Mixed Reality — Minimum System Specifications

The Dell VR118 is designed to work best at a 90 Hz refresh rate and Windows Mixed Reality Ultra systems are recommended. Before using the Dell Visor VR118, ensure that your laptop or PC meets the following minimum requirements:

Table 1. Minimum hardware requirements for Windows Mixed Reality Ultra

Type	Specifications
Processor	<ul style="list-style-type: none"> Intel Core i5 4590 (4th generation) CPU with 4 or more physical cores AMD Ryzen 5 1400 3.4 Ghz (desktop) with 4 or more physical cores
GPU	<ul style="list-style-type: none"> Nvidia GeForce GTX 1060 or greater DX12-capable discrete GPU AMD Radeon RX 470/570 or greater DX12-capable discrete GPU Windows Display Driver Model (WDDM) 2.2 or later Thermal Design Power: 15 W or greater
Display	<ul style="list-style-type: none"> Resolution: HDMI 2.0 or DisplayPort 1.2 Bit depth: 32 bits of color per pixel Monitor: VGA (800x600) connected external or integrated display required for setup and while using the headset.
Memory	<ul style="list-style-type: none"> 8 GB DDR3 or greater (with 10 GB additional free space in the hard drive)
Connectivity	<ul style="list-style-type: none"> 1x available USB port for headset (USB 3.0 Type-A or USB 3.0 Type-C) <p>NOTE: USB must supply a minimum of 900 mA. Connector adapter required for USB 3.0 Type-C ports.</p> <ul style="list-style-type: none"> Bluetooth 4.0 (for accessory connectivity)
Software	<ul style="list-style-type: none"> Windows 10 Fall Creators Update or later
Bluetooth (for controllers)	<ul style="list-style-type: none"> Bluetooth 4.0

Table 2. Operating system compatibility matrix

Windows Edition	Mixed Reality Included
Windows 10 Home	Yes
Windows 10 Pro	Yes
Windows 10 Enterprise	Yes

Windows Edition

Mixed Reality Included

Windows 10 Education

Yes

Windows 10 Pro Education

Yes

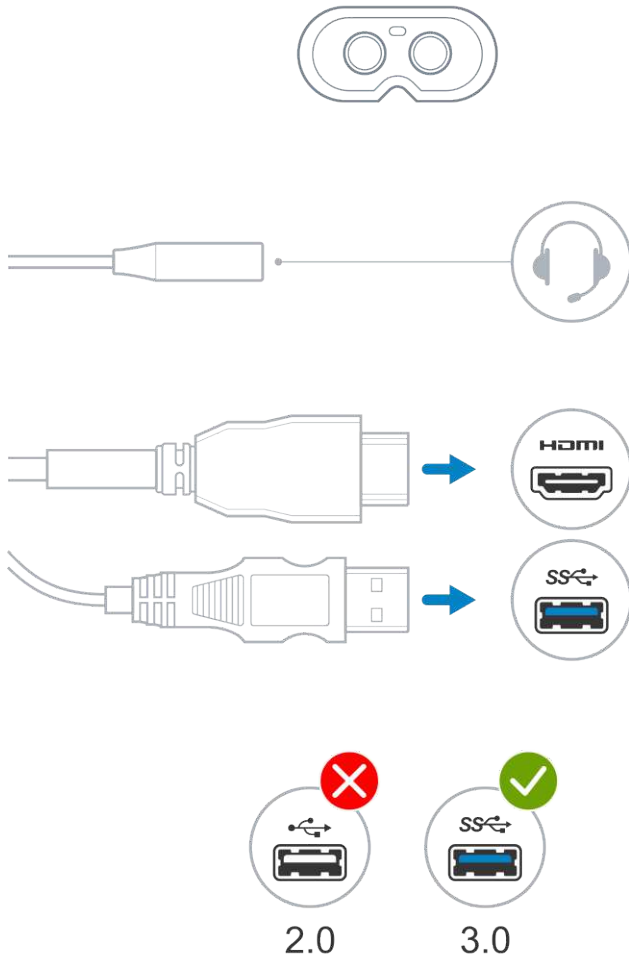
Windows 10 S

No

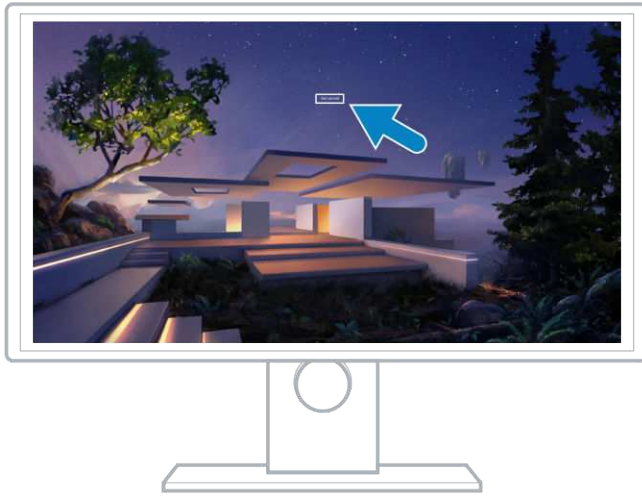
- ⓘ **NOTE:** Windows 10 S must switch to Windows 10 Pro for Windows Mixed Reality Functionality
- ⓘ **NOTE:** Windows 10 (Home, Pro, Enterprise, Education, Pro Education) to be updated with Windows 10 Fall Creator Update or later)

Quick Setup of Hardware (Dell Visor VR118)

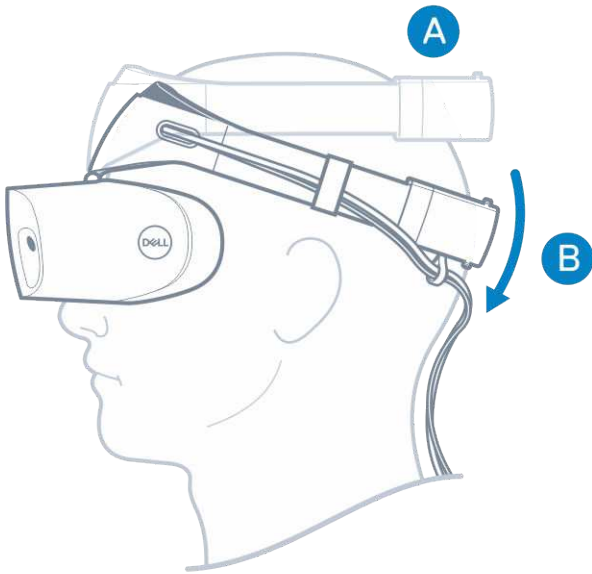
- 1 Connect the USB 3.0 and HDMI cables to their respective ports on your system. Connect your headphones (sold separately) to the audio connector.



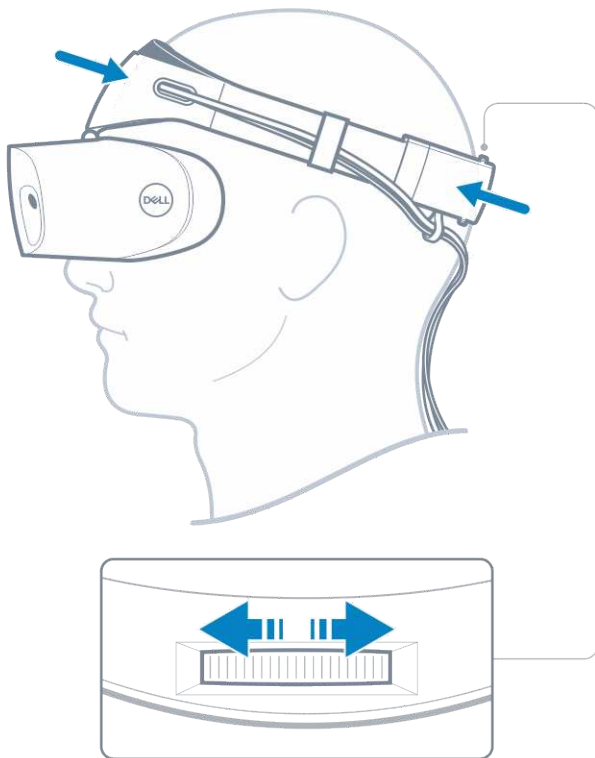
- 2 Wait for the Dell Companion App (DCA) to start the Windows Mixed Reality Welcome Screen. Click **Get started**.



- 3 Place the headset on the head (A) so that it sits comfortably on the bridge of the nose and then pull the flexible headband to fix firmly at the back of the head (B) as shown.



- 4 Use the thumbwheel at the back of the headband to obtain a proper fit (clockwise tightens the headband and anti-clockwise loosens it).



① | **NOTE:** Ensure you route the cable to lie on your back to avoid entangling yourself when moving about.

① | **NOTE:** The flip-up design of the headset also enables users wearing spectacles to enjoy the Mixed Reality experience.

⚠ | **CAUTION:** When wearing the headset, ensure you move hair away from your forehead for better sensor detection.

5 Follow the on-screen instructions to set up and calibrate your headset for optimal performance.

Setting up the Windows Mixed Reality experience

- 1 Connect the USB and HDMI cables to the respective ports on your computer.

⚠ WARNING: Ensure you read and understand the personal and product safety instructions in the Safety, Environmental, and Regulatory Information (SERI) *before* you use the Dell Visor VR118.

- 2 The Welcome to Windows Mixed Reality screen appears. Click **Get started**.

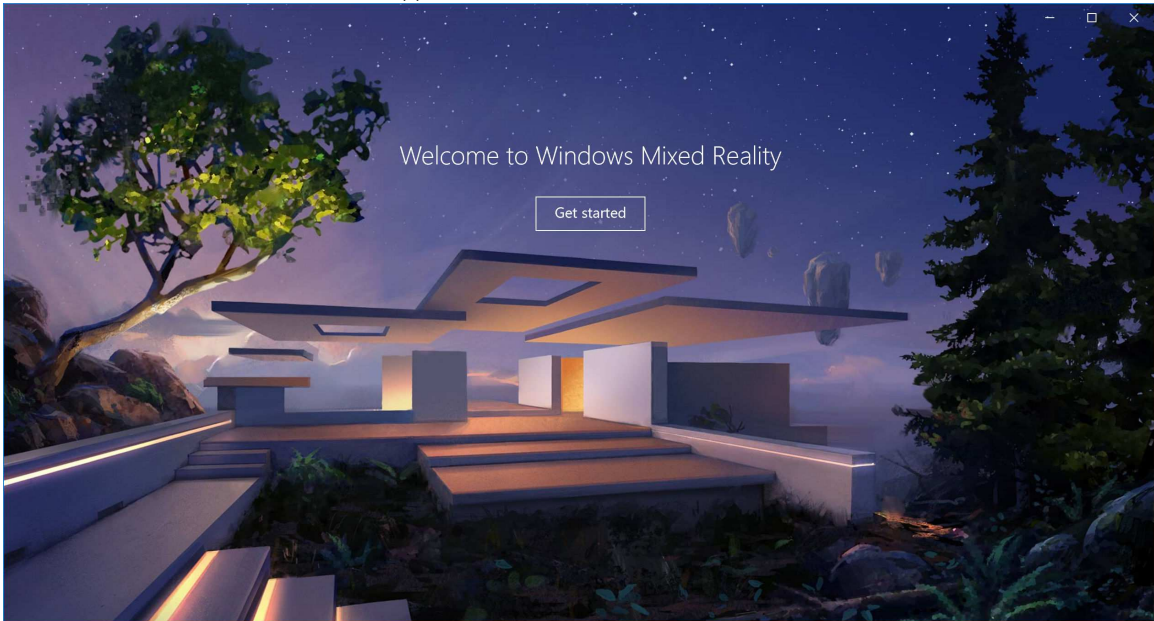


Figure 2. Welcome screen

- 3 Click **I agree** to accept the Microsoft Privacy Statement and Terms of Service.

⚠ WARNING: To reduce the risk of serious or fatal injury, use a space with plenty of room and no obstacles. Headsets and apps may have additional safety instructions or set age limits for use. Be sure anyone who uses your device follows all the safety and health guidelines.

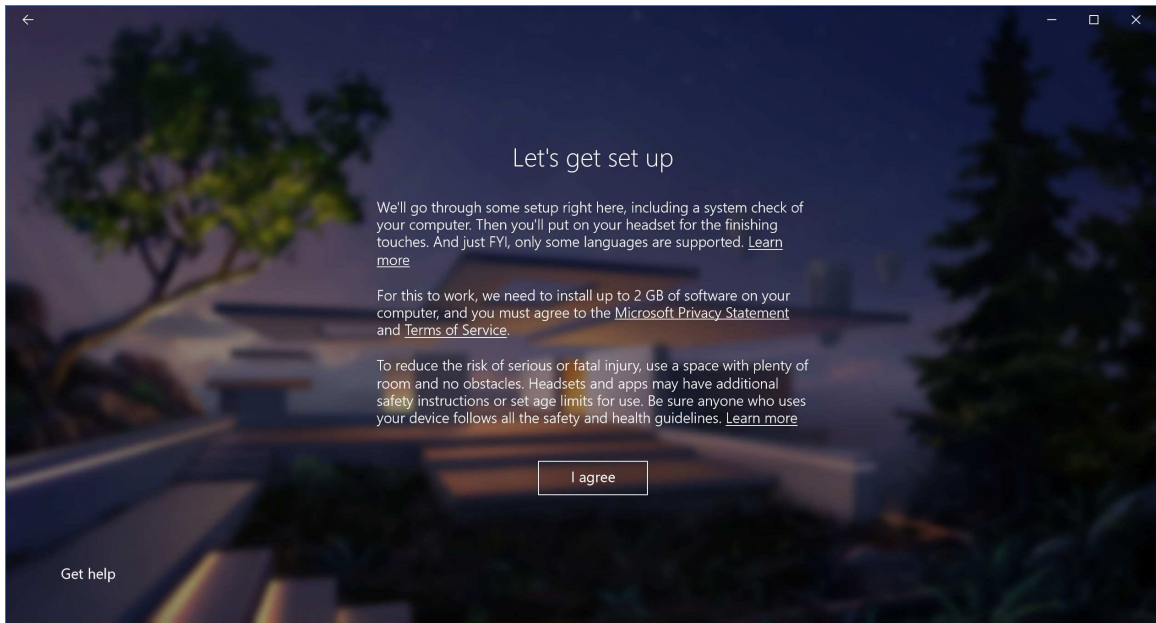


Figure 3. Agree to terms and conditions

- 4 Wait for the system compatibility check to complete.

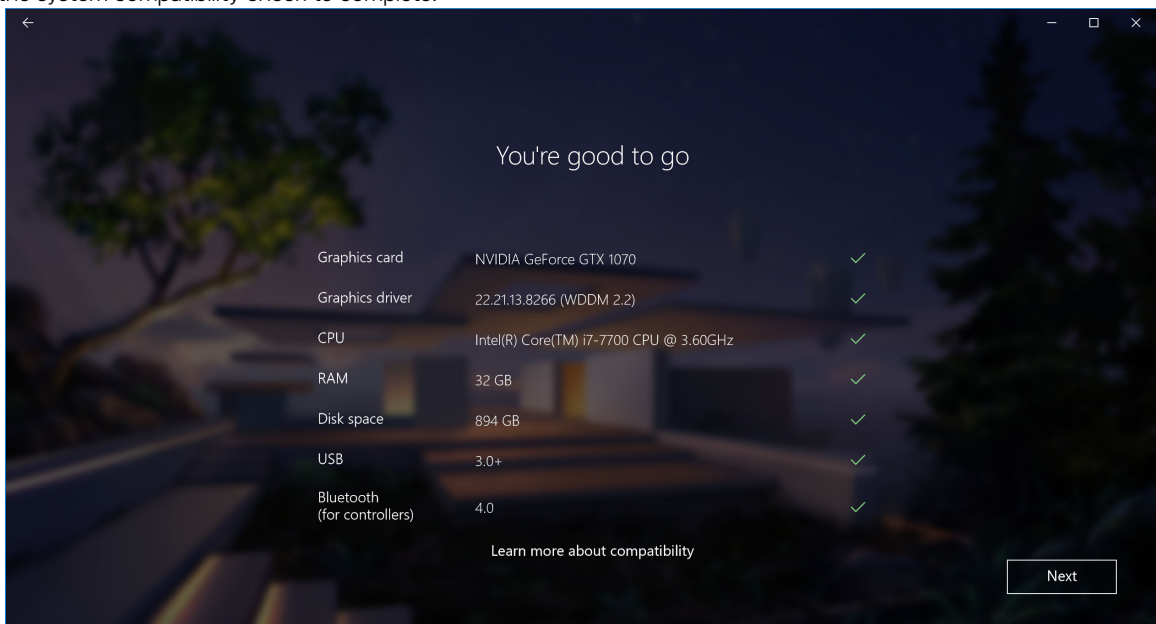


Figure 4. Compatibility check

- 5 Windows Mixed Reality works best with Dell Visor Controllers VRC100 (controllers sold separately). If available, select **Next** to set them up. Alternately, click **Use a gamepad or mouse instead** if you do not have visor controllers available at this time.

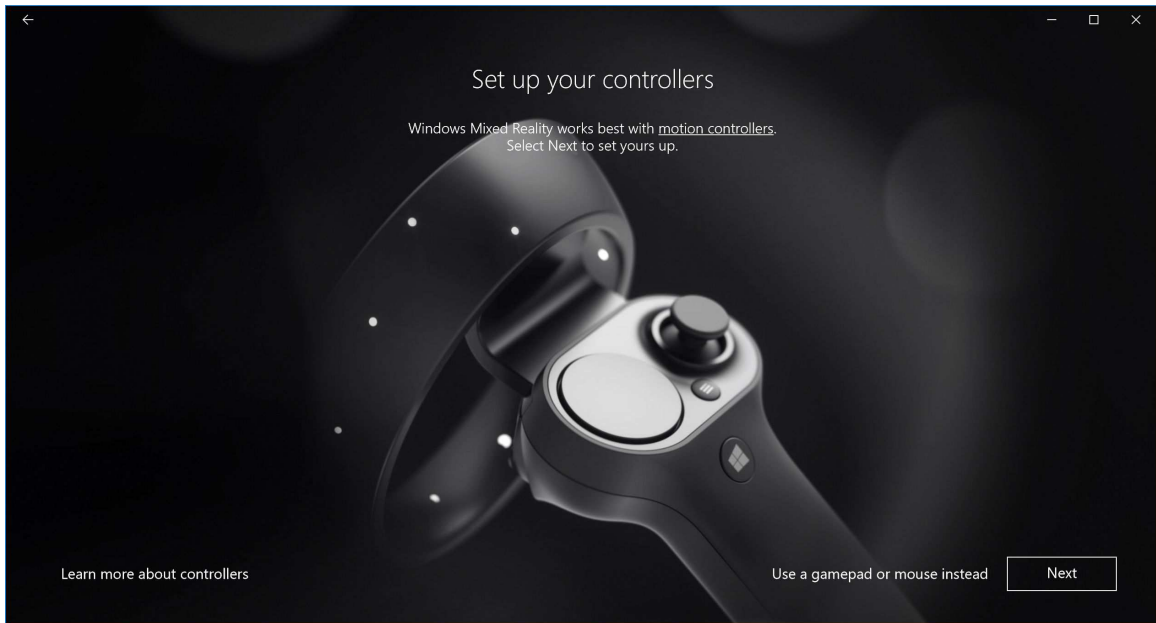


Figure 5.

- 6 Familiarize yourself with the various features of your controllers. Click **Next** to pair the controllers via Bluetooth.



Figure 6. Get to know your controllers

- 7 To pair the visor controllers, press and hold the Windows button for 2 seconds to turn on your controllers. Then, remove the battery compartment cover and press and hold the Bluetooth pairing button, as shown, until the LED constellation lights flash. Wait till both the controllers finish the pairing process.

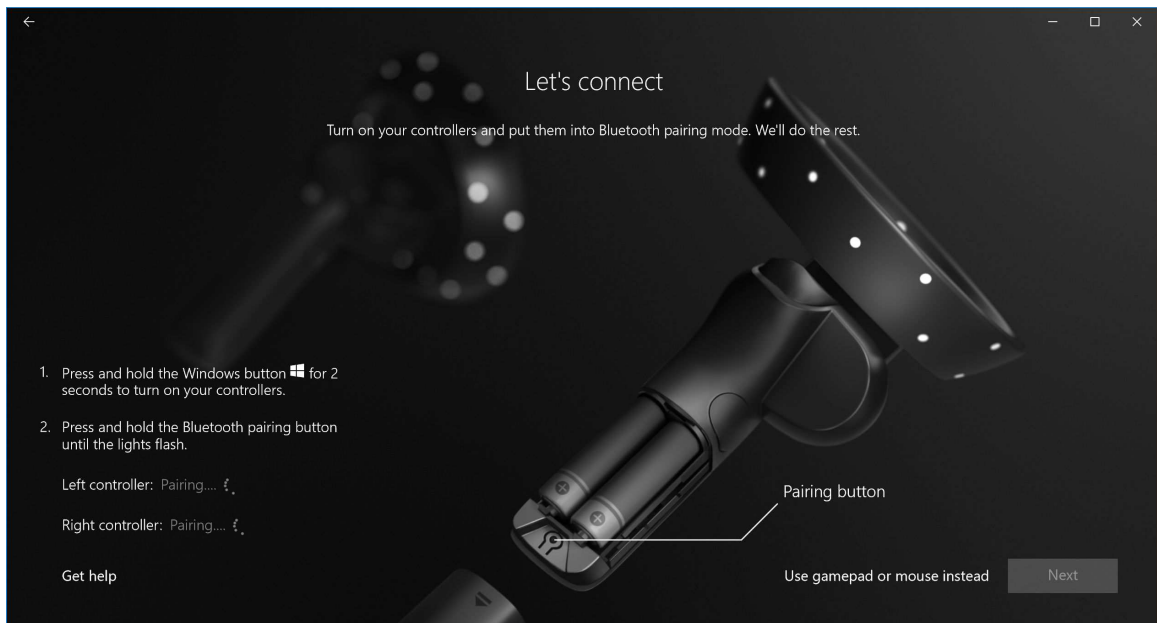


Figure 7. Pairing the visor controllers

- 8 Click **Next** once the left controller pairing is finished (a green check mark appears if the pairing is successful).

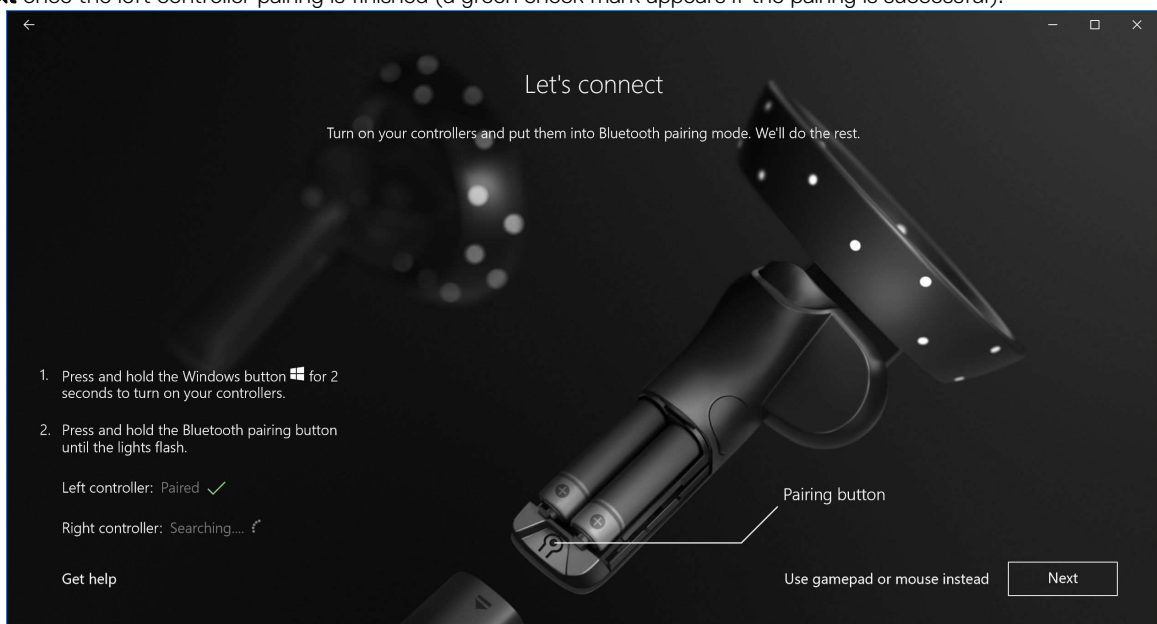


Figure 8. Pairing the left controller

- 9 Click **Next** once the right controller pairing is finished (a green check mark appears if the pairing is successful).

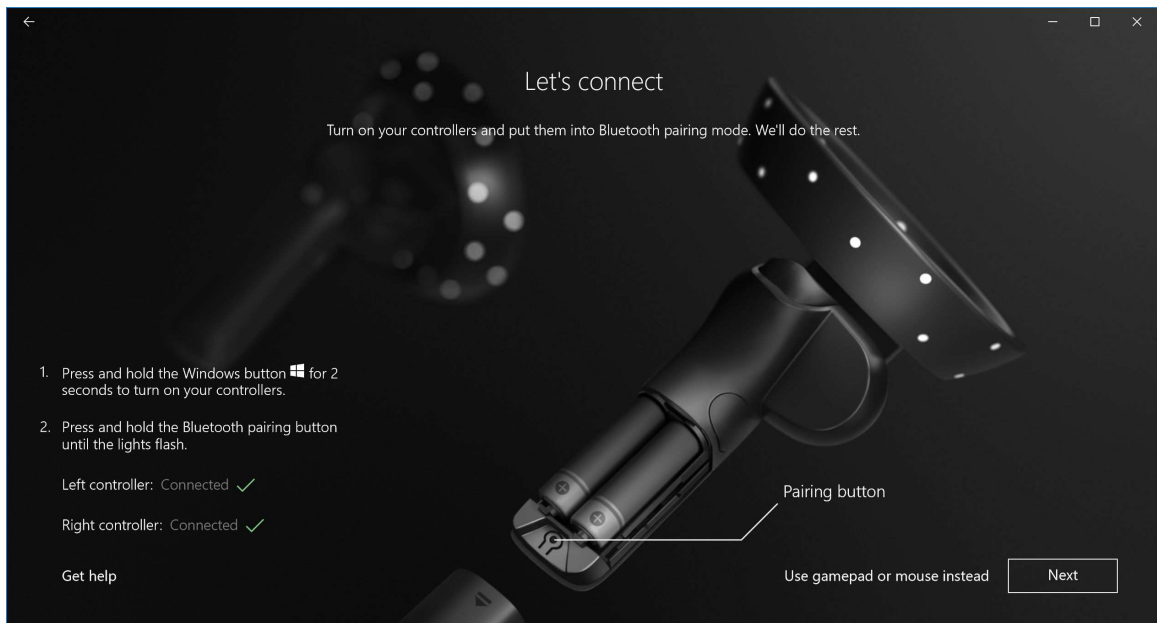


Figure 9. Pairing the right controller

10 You are now ready to use the Dell Visor VR118 and enjoy the Windows Mixed Reality experience!

Alternative Visor Controller Pairing Method:

- 1 Go to **Windows Settings** -> **Devices** -> **Bluetooth** -> **Bluetooth & other devices tab**.
- 2 Remove earlier paired controllers.



- 3 Press and hold the Windows button for 2 seconds to turn on your controllers.
- 4 Remove the battery compartment cover and press and hold the Bluetooth pairing button until the LED constellation lights flash.
- 5 Identify Visor Controllers Left & Right from the List of devices.
- 6 Then [pair the controllers](#).
- 7 Both controllers should be connected now.

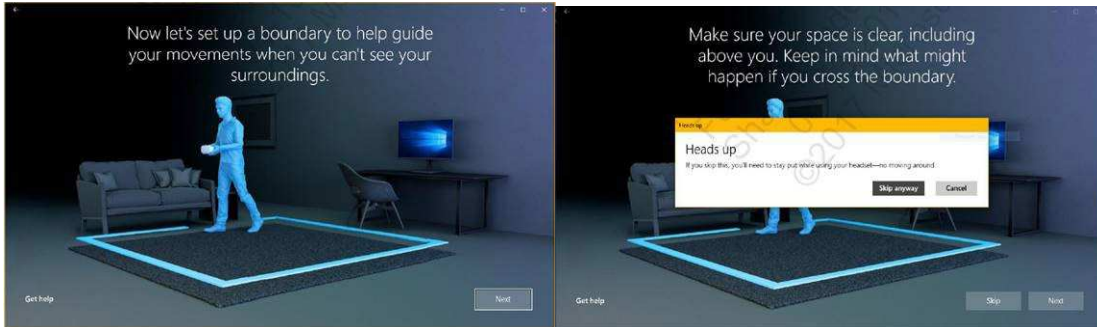


- Verify your controllers work properly:
 - a Launch **Mixed Reality Portal** and enter the Cliff House.
 - b Move your controllers and verify tracking, test buttons, and verify [teleportation](#) works.

Room Calibration Process

Before you use the headset, you can set up a boundary to help guide your movements when you cannot see your surroundings.

NOTE: Skipping this step will not impact your ability to interact with the HMD. However, in case you choose to skip it, it is encouraged that you remain seated or otherwise remain stationary when using the HMD.



- 1 Follow the room boundary instructions as shown above.
- 2 Begin at your computer and walk around the perimeter of your space with your headset.
- 3 Complete the perimeter and come back to where you started.

NOTE: To make adjustments to your defined boundary, you must start all over again.

CAUTION: Upon completion of the boundary setup, ensure you do not place any objects such as a chair or table since this may cause you to trip or strike against the objects when in the Mixed Reality experience.

Interpupillary Distance (IPD) Calibration

The Dell Visor VR118 Headset does not have a mechanical Interpupillary Distance adjustment. The Windows Mixed Reality comes with software IPD adjustment which improves image distortion and depth accuracy based on your IPD. To change IPD within your headset, open the Settings app and navigate to **Mixed Reality > Headset Display** and move the slider control. You will see changes in real time in your headset. If you know your IPD, maybe from a visit to an optometrist, you can enter it directly as well. You can also adjust this setting by going to **Settings > Mixed Reality > Headset Display** on your computer.

Technical Specifications

Table 3. Dell Visor VR118

Product name	Dell Visor
Model #	VR118
Power source	USB bus powered
Cable connectors	<ul style="list-style-type: none"> · 1 x HDMI · 1 x USB Type-A
Display:	
Panel	2 x 2.89" LCD (RGB subpixel)
Resolution	1440 x 1440 per eye, 706 ppi
Refresh rate	90 Hz
Optics:	
Lens type	Fresnel
Field of view	110 degrees
Lens adjustment	Software Interpupillary Distance (IPD)
Tracking Technology:	
Tracking architecture	6DoF, 'Inside-out' tracking
Tracking sensors	Gyroscope, Accelerometer, Magnetometer
Headset tracking hardware	Dual B+W VGA camera for mapping
Operating systems	PCs/Laptops with Windows 10 Fall Creators Update
Box content	<ul style="list-style-type: none"> · Dell Visor VR118 · Quick Setup Guide · Safety, Environmental, and Regulatory Information

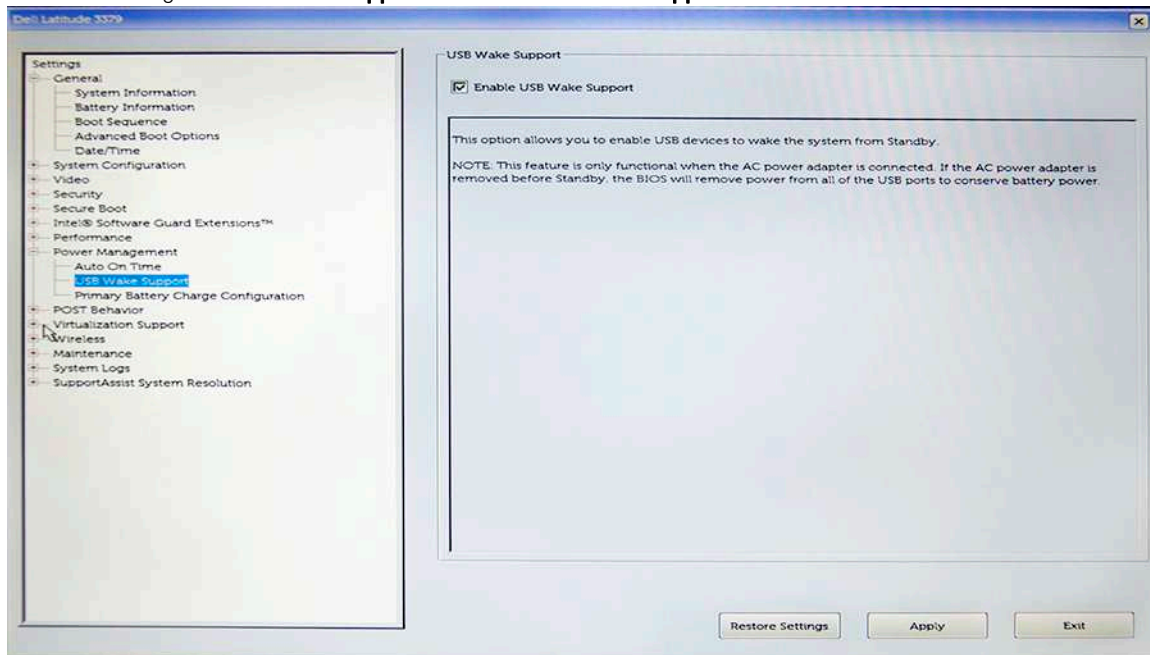
Table 4. Dell Controllers VRC100

Product Name	Dell Controllers VRC100
Tracking	<ul style="list-style-type: none">· Visible light constellation LEDs· 6DOF tracking within HMD camera FOV
Sensors	<ul style="list-style-type: none">· IMU + Magnetic sensor· Haptic feedback· Power/charging LED
Inputs	<ul style="list-style-type: none">· Thumbstick· Touchpad· Trigger button· Grab button· Windows button· Menu button· Pairing button
Connectivity	Bluetooth
Battery	4x AA batteries

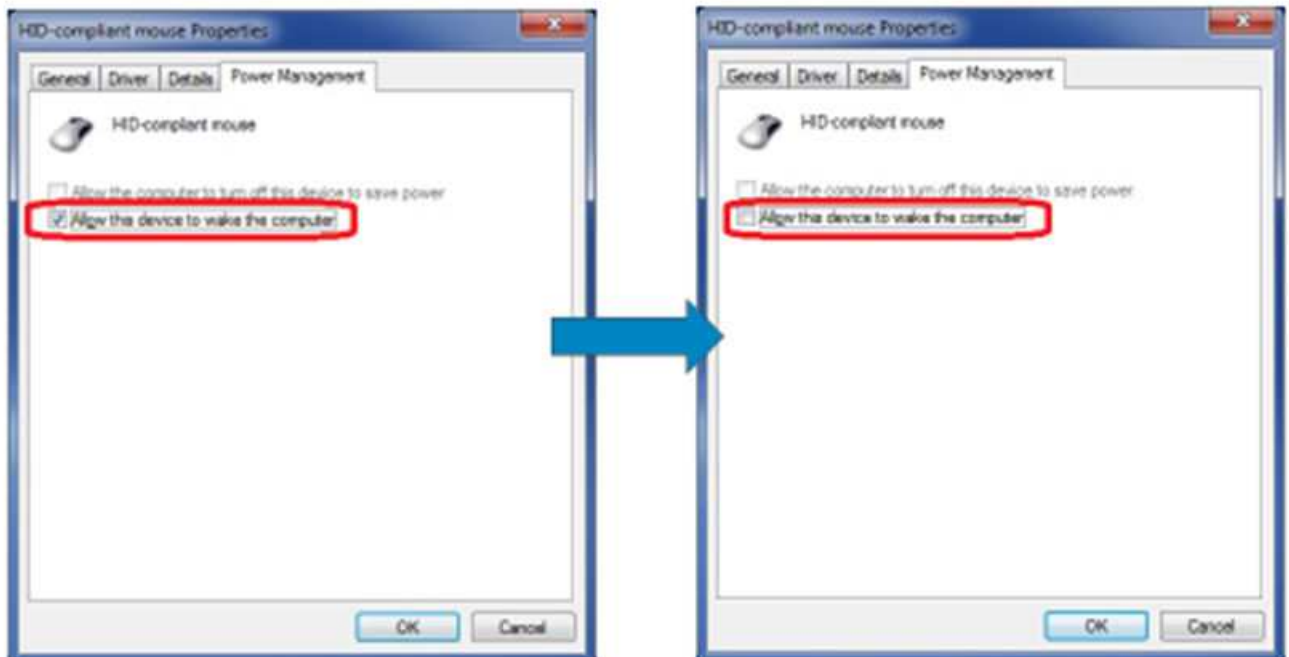
Frequently Asked Questions

1 How to enable USB wake function:

- In Device Manager > **USB Wake Support** > **Enable USB Wake Support**



- The "Allow the device to wake the computer" option will auto uncheck after resuming from S3 by USB wake.



2 Does Dell Visor support Augmented Reality?

- Dell Visor is a Windows Mixed Reality headset. It does not support Augmented Reality.
- 3 Can the Dell Visor be used by people with glasses?
- Yes, Dell Visor can be used by people wearing distance viewing glasses, the ones that people wear to have good vision when driving or for distance viewing. The Windows Mixed Reality experience might not be optimal if people wear up-close viewing glasses. The headset is focused at a distance that is further away, while reading glasses are for 'close up' or 'less than 10 feet to infinity' - thus they would not work well.
- 4 Is the face mask washable?
- Face mask material is not washable.

Troubleshooting

Bluetooth Best Practices

Visor Controllers use the same Bluetooth technology found in many consumer devices. Visor Controllers are designed to work with Bluetooth capability included in any recent computer.

If your computer does not have Bluetooth, we recommend you purchase a plugable USB Bluetooth 4.0 Low Energy Micro Adapter.

Visor Controllers should work with other Bluetooth keyboards, mice, and game controllers, but the experience will vary depending on the model of the keyboard, mouse or game controller you use.

If you are using a USB Bluetooth Adapter:

- Please ensure the USB Bluetooth Adapter is connected to a USB 2.0 port (black) if available
- Please plug the USB Bluetooth Adapter into a port that is physically separated from the HMD USB connector, flash drives, hard drives, or wireless USB receivers like those for keyboards/mice. Plugging the USB Bluetooth Adapter into the opposite side of the computer as far as possible from these other connectors is ideal.

Close the Bluetooth settings window if it's open. Leaving it open in the background means that a lot of extra calls are made to the Bluetooth protocol.

Please remove, un-pair, and power off Bluetooth headphones and speakers. These are not supported with Windows Mixed Reality. You can use the headphone jack or built-in speakers on your Mixed Reality headset for the best audio experience.

If your computer has Bluetooth already, but you are still having problems with the Visor Controllers, consider replacing your Bluetooth radio with an external Bluetooth Adapter plugged into USB.

NOTE: You will need to disable your existing Bluetooth radio in Device Manager and un-pair / re-pair all of your previous Bluetooth devices.

Device recovery

If the controller is not working correctly and you are unable to update the device, you can always restore the device to factory conditions. To recover your device:

- 1 Unplug and power off the controllers.
- 2 Open the battery cover.
- 3 Insert batteries (ensure you have good batteries when performing device recovery).
- 4 Press and hold the pairing button (tab at the bottom under the batteries).
- 5 While holding the pairing button, power on the controller by pressing and holding the Windows button for 5 seconds (keep both buttons held).
- 6 Release the buttons and wait for the controller to power on. This takes up to 15 seconds and there are no indicators when the device recovery is happening. If device powers on immediately on button release, recovery button sequence did not get registered and you need to try again.
- 7 Remove the old controller associations from the Bluetooth settings (**Settings > Bluetooth & other devices**, and select **Visor controller - Left** or **Visor controller - Right** and **Remove device**. After that, pair the controller to the computer again.
- 8 After connecting with the host and Dell Visor, the device will update the firmware to the latest available.
- 9 After the firmware has been updated, you need to unpair and pair the controllers again to get it to work properly.

Lights and Indicators

Table 5. Lights and Indicators

Visor controller state	How you get into this state	Visor controller light and vibration behavior associated with state
Power on	Press and hold the Windows button on the controller for 2 seconds to turn on the controller.	LEDs turn on and the controller vibrates once.
Power off	Press and hold the Windows button on the controller for 4 seconds to turn off the controller.	LEDs turn off and the controller vibrates twice.
Sleeping	Controller enters sleeping state automatically when it is motionless for 30 seconds. Controller automatically wakes when it detects motion (except when the device is not paired with host computer, a button press will be required to wake-up).	LEDs turn off, blink every 3 seconds while in sleeping state.
Pairing	Press and hold the pairing button inside the battery case for 3 seconds.	LEDs slowly pulse while in pairing mode. LEDs go solid when exiting the pairing mode. The controller vibrates once if pairing was successful or vibrates 3 times if pairing is unsuccessful and times out.
Controller connects to/ disconnects from the computer	Controller successfully connects to the computer after you turned it on. Controller disconnects from the computer during use for some reason.	Controller vibrates once on computer connection or disconnection.
Low Battery Level	When battery level is low.	No LED or vibration indication when battery is low. If you look at the representation of the controller in the headset, there is a battery indicator icon on the handle. When battery is low, the indicator icon will be red.
Critical Battery Level	During power on when battery level is "Critical". "Critical" battery level means there is insufficient power for controller to stay on and the controller will turn off automatically.	Controller vibrates 3 times when you turn it on, then automatically turns off.
Device Update	This happens when you turn the controller on and a firmware update is required.	During controller firmware update, the controller will be unresponsive, though you will still be able to turn it off. If you turn it off during firmware update, the controller will simply try to update again the next time you turn it on and it connects to the computer. When a controller firmware update starts, you will see a Windows notification telling you that the controller is being updated. During firmware update, the LEDs will blink in an alternating pattern of half of the outer ring lights, then half of the inner ring lights.

Mixed Reality Portal cannot detect headset

- Make sure your HDMI cable is connected to an HDMI port to your discrete graphics card.
- Ensure that your headset is connected to a USB 3.0 port.
 - Double check that your computer's USB controller driver is running the Microsoft USB driver stack.
 - Certain computers may have USB ports that do not supply enough power. Please try a powered USB 3.0 hub.

- Avoid using a USB extension cable unless a powered USB 3.0 hub is also used. Make sure all segments are USB 3.0 capable.
- Ensure that, if any adapters are used to connect the HDMI cable to your computer, you are using a recommended adapter.
- Do not use HDMI extension cables.
- If your machine has two discrete GPUs, you may need to update settings (e.g. disable SLI, activate all displays) to send output to the immersive headset.

Other things you can try:

- Ensure that the latest Mixed Reality driver is installed. With your headset connected, check for Windows Updates.
- Unplug and re-plug the USB and HDMI cables.
- Restart your machine.

Mixed Reality Portal setup is stuck

- Make sure your HDMI cable is connected to a HDMI port of your discrete graphics card.
- Unplug and re-plug the USB and HDMI cables.
- Restart your machine.

Immersive headset displays are blank

- Graphics driver outdated or other graphics driver issues: make sure your video drivers are up-to-date.
- Ensure, if any adapters are used to connect the HDMI cable to your computer, that you are using a recommended adapter.

Floor setup issues

- Check that your headset is plugged in.
- Ensure the sensor is not blocked and there is enough light.
- Stand in the middle of your space and face your monitor.
- Be sure to hold the headset at eye level.

Mixed Reality Portal is stuck on "scanning for boundaries"

- Run Setup again from the Mixed Reality Portal.
- Click on the hamburger icon (upper right) and then **Run Setup**

Cannot trace the boundary

- Don't get too close to a wall or other obstruction.
- Ensure the sensor is not blocked and there is enough light.
- The space you are tracing should be larger than 3 square meters.
- The space should not be too large or too complicated—stick to a simple geometric shape without a lot of twists and turns.
- Do not intersect your own path as you are tracing.
- If you get stuck in a corner, start over.

I want to skip boundary tracing

- If you choose not to set up a boundary, you will need to stay in place while using your headset; it may not be safe to move around.

Statutory information

Warranty

Limited warranty and return policy

Dell-branded products carry a 1-year limited hardware warranty. If purchased together with a Dell system, it will follow the system warranty.

For U.S. customers:

This purchase and your use of this product are subject to Dell's end user agreement, which you can find at [Dell.com/terms](https://www.dell.com/terms). This document contains a binding arbitration clause.

For European, Middle Eastern and African customers:

Dell-branded products that are sold and used are subject to applicable national consumer legal rights, the terms of any retailer sale agreement that you have entered into (which will apply between you and the retailer) and Dell's end user contract terms.

Dell may also provide an additional hardware warranty—full details of the Dell end user contract and warranty terms can be found by going to [Dell.com](https://www.dell.com), selecting your country from the list at the bottom of the “home” page and then clicking the “terms and conditions” link for the end user terms or the “support” link for the warranty terms.

For non-U.S. customers:

Dell-branded products that are sold and used are subject to applicable national consumer legal rights, the terms of any retailer sale agreement that you have entered into (which will apply between you and the retailer) and Dell's warranty terms. Dell may also provide an additional hardware warranty—full details of Dell's warranty terms can be found by going to [Dell.com](https://www.dell.com), selecting your country from the list at the bottom of the “home” page and then clicking the “terms and conditions” link or the “support” link for the warranty terms.

Contacting Dell

NOTE: If you do not have an active Internet connection, you can find contact information on your purchase invoice, packing slip, bill, or Dell product catalog.

Dell provides several online and telephone-based support and service options. Availability varies by country and product, and some services may not be available in your area. To contact Dell for sales, technical support, or customer service issues:

- 1 Go to **Dell.com/support**.
- 2 Select your support category.
- 3 Verify your country or region in the **Choose a Country/Region** drop-down list at the bottom of the page.
- 4 Select the appropriate service or support link based on your need.

Topics:

- [For Dell Visor VR118:](#)
- [For Dell Visor Controllers VRC100:](#)

For Dell Visor VR118:



For Dell Visor Controllers VRC100:

